

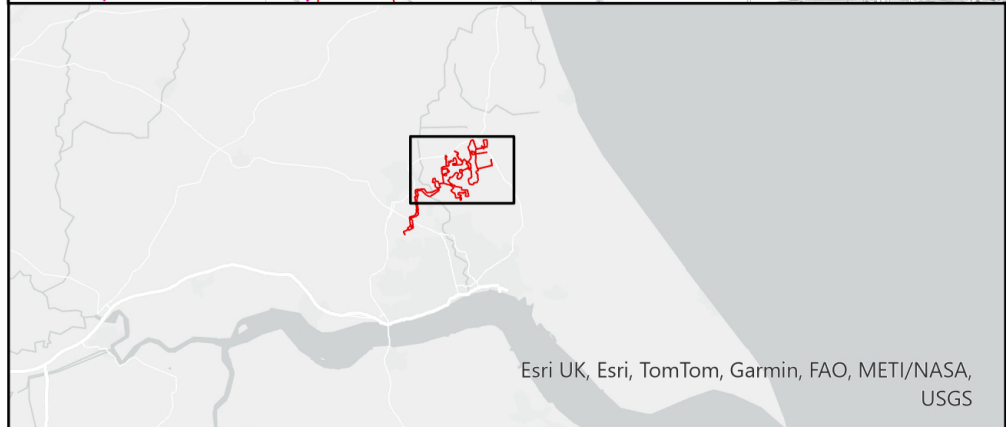
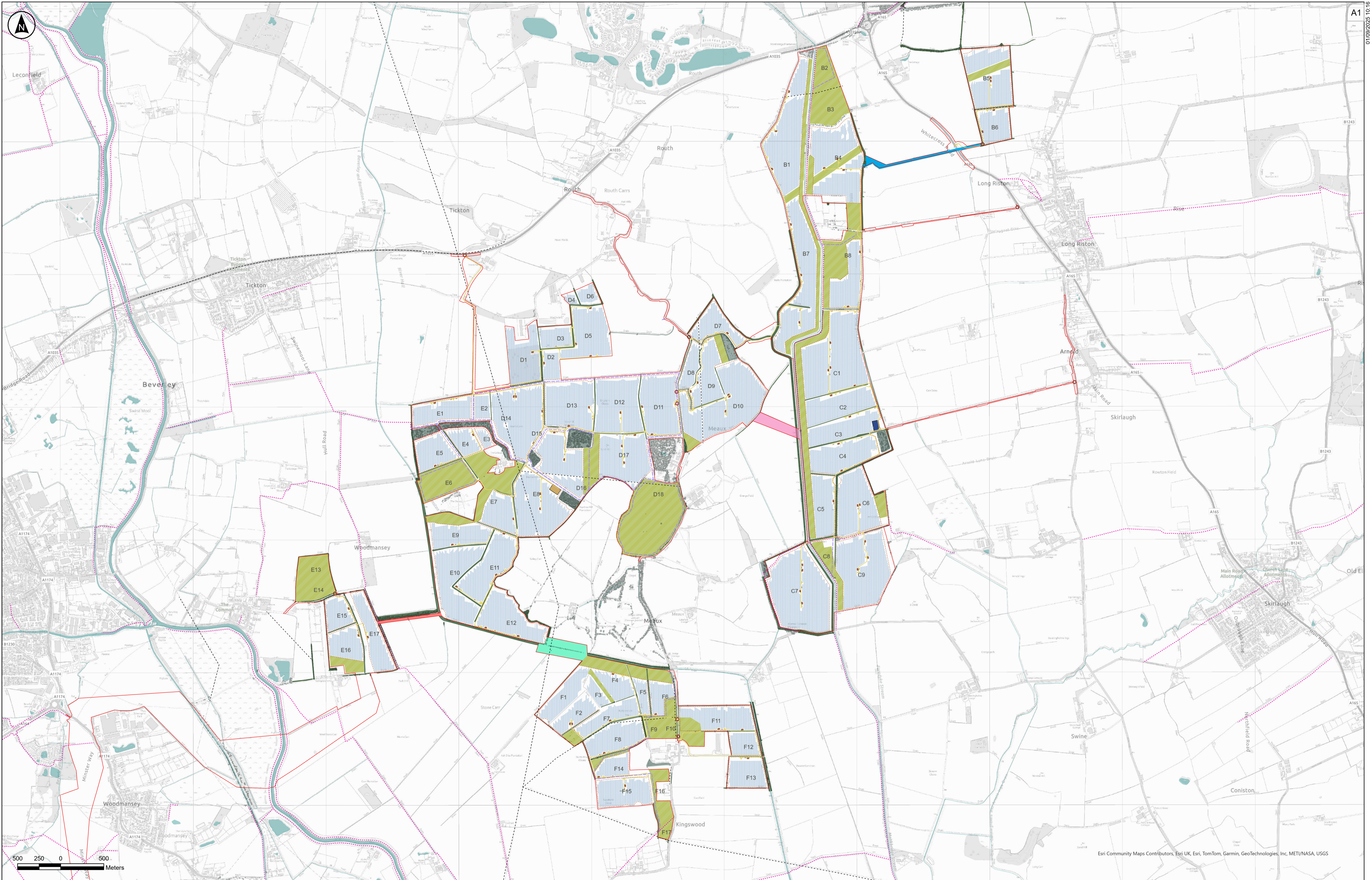
Peartree Hill Solar Farm

Environmental Statement

Volume 3

Figure 3.1: Indicative Operational Layout Plan

Revision 2



Key

Order Limits

Existing Features

Public Rights of Way

Powerlines and Pylons

Hedgerows

Woodlands/Trees

Proposed Development

Operational Access Points

On-Site Substation East

On-Site Substation West

Hybrid Packs (Inverters, Converters and BESS Units)

Waterbodies and Watercourses

Internal Access Tracks

Permissive Paths

Fencing

Indicative Areas for Mitigation, Enhancement and/or Retained Agricultural Land

Field Reference

Solar PV Modules

Interconnecting Cabling Corridors between Land Areas

Cable C-D

Cable B-B

Cable E-E

Cable E-F

Notes:

1. This drawing is for illustrative purposes only.
2. The location of features shown are indicative only to show the key features of Peartree Hill Solar Farm for which development consent is sought.
3. The Indicative layout demonstrates one way that the Proposed Development could be undertaken within the parameters of the DCO [EN010157/APP/5.8], consent is not sought specifically for this layout.
4. Underground features (such as cables), joining bays, and boundary treatments (such as perimeter fencing and CCTV) are not shown.

PO3	28/08/2025	NAM	EH	AD	MG
Rev	Date	By	Chkd	Appd	Authd

Client

Project Name
Peartree Hill Solar Farm

Drawing Title
Environmental Statement Volume 3, Figure 3.1: Indicative Operational Layout Plan

Scale at A1 1:13,000	Coordinate System British National Grid
Status DCO Application	
Infrastructure Planning (Applications: Prescribed Forms and Procedure) Regulations 2009: 5(2)(a)	
PINS Number EN010157/APP/5/3	Rev P03

RWE Renewables UK Limited

Windmill Hill Business Park,
Whitehill Way,
Swindon,
Wiltshire,
England,
SN5 6PB
www.rwe.com